

BRAZOS



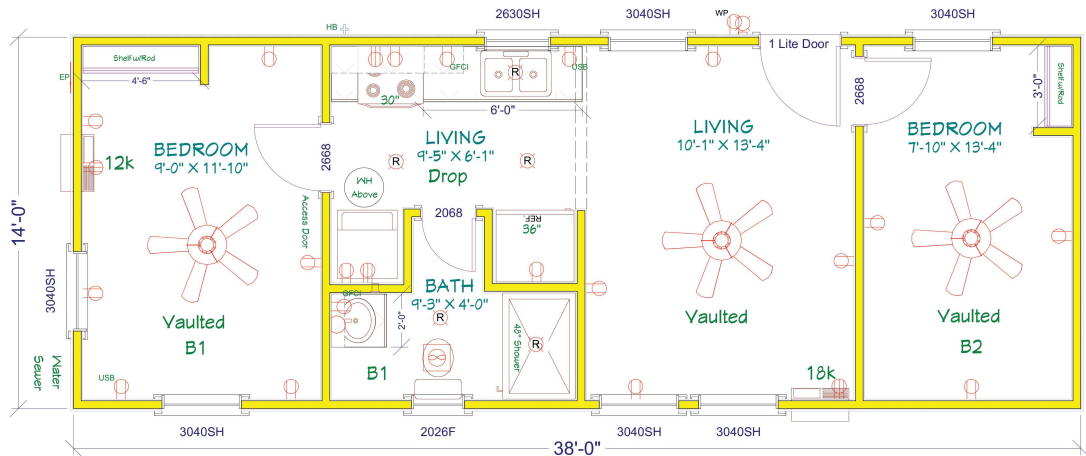
1-2 Bedroom | 1 Bath | 532 - 608 Sq. Feet



www.lelandscabins.com

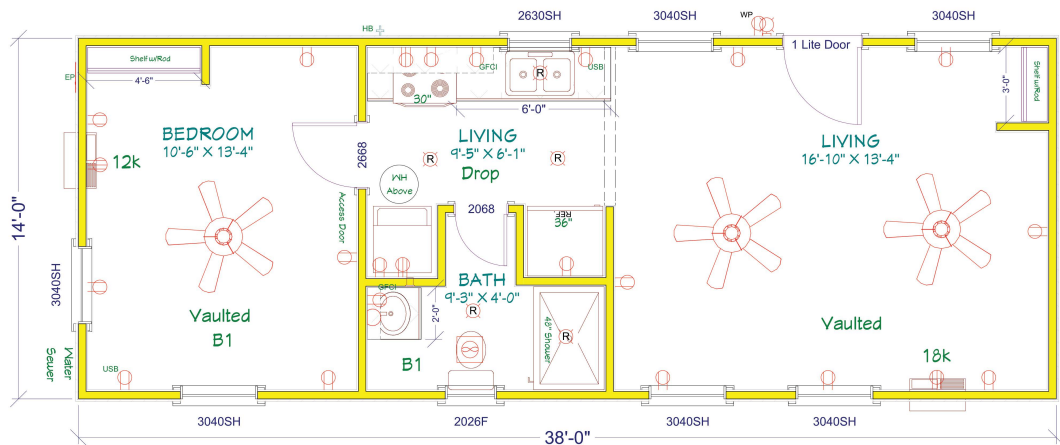
Brazos - 101

532 Sq. Feet | 2 Bed | 1 Bath



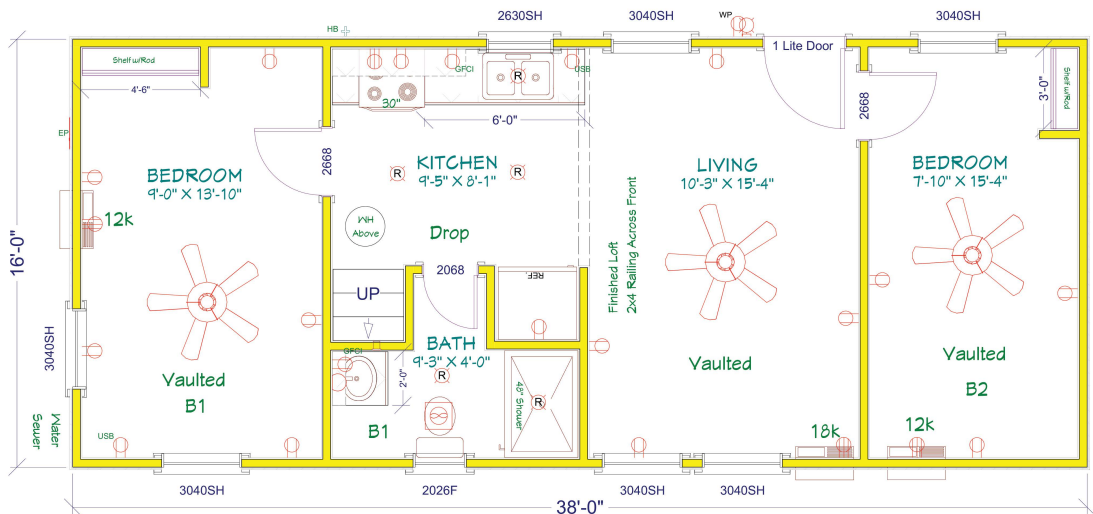
Brazos - 102

532 Sq. Feet | 1 Bed | 1 Bath



Brazos - 103

608 Sq. Feet | 2 Bed | 1 Bath





PRICING CHANGING FREQUENTLY DUE TO LUMBER MARKET, CHECK WITH SALES AGENT FOR 7 DAY PRICE QUOTE.

Starting price includes basic options. Upgrade pricing listed below. Pricing includes delivery within 100 miles of Grandview. Add'l mileage is \$7/mile.

BRAZOS 101**Basic Options: \$57,303**

532 Sq Feet, 2 Bed 1 Bath	Included in Base Price	Upgrades					
Exterior	Smart Panel	Board & Batten	\$1,397	LP Smart Lap	\$4,665	8" Split Cedar Log*	\$9,558
Wall Finish	Clear Coat Finish	Homestead Dlx Finish	\$875				
Walls - Ponderosa Pine Shiplap or VBoard	Ponderosa Pine	Whitewashed Pine	\$0	Painted Pine	\$2,727		
Ceiling -Ponderosa Pine Shiplap or VBoard	Pine or Corrugated Metal	Whitewashed Pine	\$0	Painted Pine	\$2,633		
Flooring	Elements Laminate Plank Flooring	Riverside Vinyl Plank	\$1,902	Springloc Wood Plank	\$2,427		
Cabinets	Pine	Rustic Hickory	\$411	Coffee Pecan	\$758	Painted	\$758
Mechanical Options	(2) 12K AC/Heat Unit, (1) 18K AC/Heat Unit	Mini Split AC System (3 Head)	\$11,330				
Insulation	R13 in Walls R19 in Ceiling Spray Foam Subfloor	Spray Foam Exterior Walls	\$2,156	Spray Foam Ceiling	\$2,101	Spray Foam Walls & Ceiling	\$3,355
Other Options (by size)		Raised Sidewall**	\$27.5/LF	Finished Loft	\$ 6/SF	12" Overhang	\$1,784

BRAZOS 102**Basic Options: \$56,066**

532 Sq Feet, 1 Bed 1 Bath	Included in Base Price	Upgrades					
Exterior	Smart Panel	Board & Batten	\$446	LP Smart Lap	\$4,665	8" Split Cedar Log*	\$7,094
Wall Finish	Clear Coat Finish	Homestead Dlx Finish	\$975				
Walls - Ponderosa Pine Shiplap or VBoard	Ponderosa Pine	Whitewashed Pine	\$0	Painted Pine	\$2,727		
Ceiling -Ponderosa Pine Shiplap or VBoard	Pine or Corrugated Metal	Whitewashed Pine	\$0	Painted Pine	\$2,633		
Foring	Elements Laminate Plank Flooring	Riverside Vinyl Plank	\$1,902	Springloc Wood Plank	\$2,427		
Cabinets	Pine	Rustic Hickory	\$411	Coffee Pecan	\$758	Painted	\$758
Mechanical Options	(1) 12K AC/Heat Unit, (1) 18K AC/Heat Unit	Mini Split AC System (2 Head)	\$8,965				
Insulation	R13 in Walls R19 in Ceiling Spray Foam Subfloor	Spray Foam Exterior Walls	\$2,156	Spray Foam Ceiling	\$2,101	Spray Foam Walls & Ceiling	\$3,355
Other Options (by size)		Raised Sidewall**	\$27.5 /LF	Finished Loft	\$6/SF	12" Overhang	\$1,794

BRAZOS 103 *LOFT & RAISED SIDEWALL INCLUDED IN BASE***Basic Options: \$63,527**

608 Sq Feet, 2 Bed 1 Bath	Included in Base Price	Upgrades					
Exterior	Smart Panel	Board & Batten	\$1,558	LP Smart Lap	\$5,179	8" Split Cedar Log*	\$10,126
Wall Finish	Clear Coat Finish	Homestead Dlx Finish	\$1,000				
Walls - Ponderosa Pine Shiplap or VBoard	Ponderosa Pine	Whitewashed Pine	\$0	Painted Pine	\$2,864		
Ceiling -Ponderosa Pine Shiplap or VBoard	Pine or Corrugated Metal	Whitewashed Pine	\$0	Painted Pine	\$3,010		
Flooring	Elements Laminate Plank Flooring	Riverside Vinyl Plank	\$2,174	Springloc Wood Plank	\$2,773		
Cabinets	Pine	Rustic Hickory	\$411	Coffee Pecan	\$758	Painted	\$495
Mechanical Options	(2) 12K AC/Heat Unit, (1) 18K AC/Heat Unit	Mini Split AC System (3 Head)	\$11,330				
Insulation	R13 in Walls R19 in Ceiling Spray Foam Subfloor	Spray Foam Exterior Walls	\$2,338	Spray Foam Ceiling	\$1,495	Spray Foam Walls & Ceiling	\$3,620
Other Options (by size)	10' Raised Sidewall, 168 SF Finished Loft	Raised Sidewall**	\$27.5 /LF	Finished Loft	\$6/SF	12" Overhang	\$1,854

Decks and Skirting are additional.

*Log Siding quote is with Smooth Corners. Butt & Pass Log corners additional \$3,552.

** Additional Windows for the Raised Sidewall are \$250 each

LUMBER SURCHARGE ADDED TO TOTAL CABIN PRICE.